



23 Shrewsbury Bow, Weston Village, Weston-super-Mare, BS24 7SB

£400,000

- Well Presented Detached Four Bedroom House
- Two Reception Rooms
- Conservatory and Office
- Family Bathroom, En-Suite & DS W/C
- Parking for Several Cars
- GCH and Double Glazed
- Garden Pod
- No Chain

23 Shrewsbury Bow, Weston-super-Mare BS24 7SB

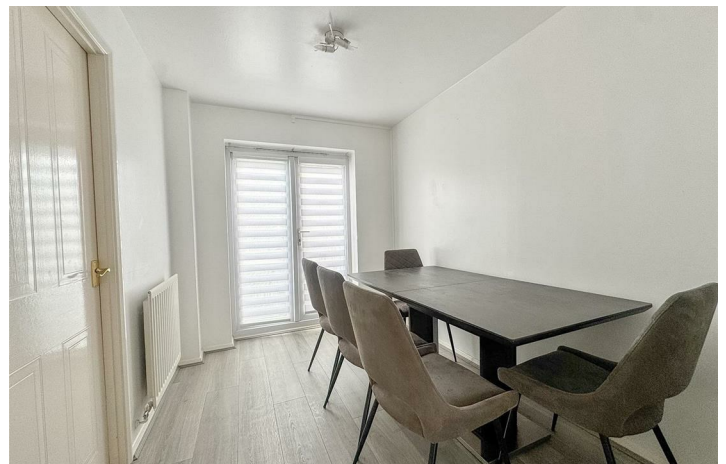
Rachel J Homes is delighted to market this Beautifully Presented Detached House ideally situated in a great location close to Shops, Schools, Transport Links and Amenities. If you are looking for a home that you can "just move in" and offers plenty of living space then make sure this is on your list to view. The accommodation briefly comprises of Lounge, Dining Room, Kitchen, Conservatory, Utility, Downstairs Cloakroom, Study, Four Bedrooms, Master with Ensuite, Family Bathroom, Low Maintenance Rear Garden with a Garden Room, Garage and Parking for Several Vehicles. Added benefits of this super home include Double Glazing, Gas Central Heating, plus there is no onward chain. Accompanied viewings - CALL NOW!!



EPC
D

Freehold

Council Tax Band: E



Entrance

Wood and glass entrance door opening into;

Lounge

3.99 by 3.12 (13'1" by 10'2")

UPVC double glazed box bay window to front, two radiators, laminate flooring with under floor heating, T.V point, stairs to first floor, arch through to;

Dining Room

2.84 by 2.31 (9'3" by 7'6")

UPVC double glazed French doors to rear, radiator, laminate flooring with under floor heating, door to;

Kitchen

2.87 by 2.82 (9'4" by 9'3")

Range of wall and base units with work surface over and tiled splash back, integrated dishwasher, fridge and freezer, built in electric hob with electric oven under and extractor over, quartz sink and drainer with mixer tap over, laminate flooring with under floor heating, door to utility, arch to;

Conservatory

2.95 by 2.69 (9'8" by 8'9")

UPVC double glazed and brick construction, insulated roof, laminate flooring with under floor heating, doors to rear garden.

Utility

Wood and glass door to side, space for washing machine, wall mounted boiler, radiator, laminate flooring with under floor heating, door to office and door to;

Downstairs W/C

UPVC Double glazed window to rear, low level W/C, wash hand basin set into vanity unit, radiator, part tiled walls.

Office

2.46 by 2.24 (8'0" by 7'4")

Coved ceiling, laminate flooring with under floor heating, telephone point.

Stairs to first floor landing

Loft hatch, storage cupboard housing water tank, doors off.

Master Bedroom

4.04 by 3.15 (13'3" by 10'4")

Dual aspect UPVC Double glazed windows to front and side, radiator, T.V point, arch to;

En-suite

UPVC double glazed window to front, shower cubicle with electric shower, wash hand basin set into vanity unit, tiled flooring, UPVC panelled walls.

Bedroom Two

3.56 by 2.46 (11'8" by 8'0")

UPVC double glazed window to front, radiator.

Bedroom Three

3.33 by 2.67 (10'11" by 8'9")

UPVC Double glazed window to rear, radiator, T.V point.

Bedroom Four

2.84 by 1.98 (9'3" by 6'5")

UPVC double glazed window to rear, radiator, T.V point.

Bathroom

1.98 by 1.68 (6'5" by 5'6")

UPVC Double glazed window to rear, fully tiled walls and floor, panel bath with hot water shower over, low level W/C, pedestal wash hand basin, heated towel rail, extractor fan, shaver point.

Front Garden

Laid to stamped concrete with parking for several cars.

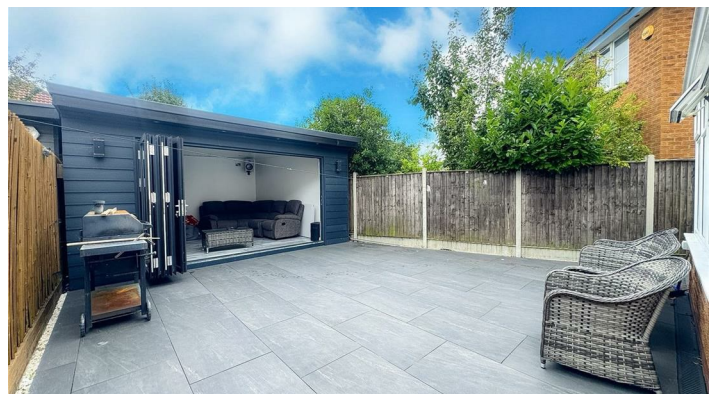
Rear Garden

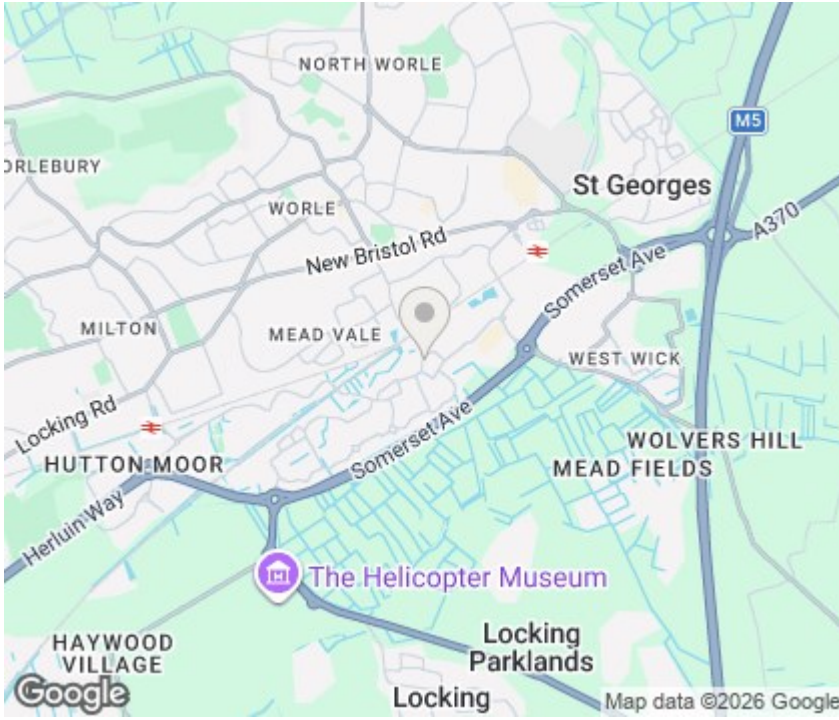
Enclosed by fence, laid to paving, Garden Pod with light and power, side gate giving access to front.

Garage

Up and over door, light and power. The garage has been boarded down the middle giving storage at the front - the rear has been converted into office space.







Viewings

Viewings by arrangement only. Call 01934 621299 to make an appointment.

EPC Rating:

D

Energy Efficiency Rating		
	Current	Potential
Very energy efficient - lower running costs		
(92 plus) A		
(81-91) B		84
(69-80) C		
(55-68) D	67	
(39-54) E		
(21-38) F		
(1-20) G		
Not energy efficient - higher running costs		
England & Wales	EU Directive 2002/91/EC	



This plan is illustrative only, its details cannot be relied upon and no liability is taken for any errors.